







AZIMUT  
YACHTS



Azimut Yachts is celebrating the fortieth anniversary of the Azimut-Benetti Group by unveiling eight new models that range from 38 to 100 feet. It is an unprecedented event that confirms the design ability of the brand, enhances its innovative nature and demonstrates its role as a leader in its field. Seven models that bring real innovative change to the product lines and one, the eighth, that actually creates a new product line by introducing new definitions and setting a benchmark for world yachting. Eight new models represent the Azimut Yachts season: 4 flybridges, 2 new opens and the new Leonardo

reinterpret and expand on the concepts of prestige, elegance, light, space, comfort, style and design by enhancing the ability to make every moment onboard a moment to be cherished for ever. With the Magellano, the first model in a new line of motor yachts, every trip, whether long or short, will not only be a unique, unrepeatable experience but sheer emotion. It is no coincidence that the symbol chosen to celebrate the exceptional launching of this extraordinary season is the symbol for infinity, the most appropriate sign for interpreting the nature and spirit of a company that constantly looks to the future.





"MY VOYAGE"



# MAGELLANO 74

*The sea is my true life*

The spirit of travel is back in the form of the Azimut Magellano 74. The Magellano is the yacht for anyone who has a real passion for the sea, loves to move in a relaxed way, stops whenever they want to take a photograph and loves to plan their route mile after mile because the journey is more important for them than the destination. At the same time, the Azimut Magellano is also the ideal power yacht for long distances, exploring new horizons and tackling waves and choppy or rough seas. With a deep V-hull in the bow sections, the Magellano is classed as a semi-displacement motor yacht although it is unlike any other category to date. More than a navetta, a trawler or an expedition yacht, the Magellano has a number of special characteristics that place it at the top of a new generation. The Magellano is dedicated to those who want to sail their own boats themselves in close contact with family or friends; it is for those who love freedom and often informality without sacrificing comfort and has been designed for users who do not limit their desire to explore yet do not push their supreme passion to extremes.

With over 1100 nautical miles autonomy at a speed of 12 knots, the Magellano can reach any destination due to the possibility of accelerating up to 24 knots and maintaining stability both when sailing and when moored by using its Seakeeper® gyroscopic stabiliser. The project is inspired by comfort and safety. The helm station is central both on the flybridge and inside to ensure increased visibility. The stern guardrail and the bulwark are high to offer protection even when the sea is rough. The external walkways are extremely safe and are 60 cm (24 inches) wide with only two steps to reach the bow area where you can move freely in an area which is free of clutter thanks to an automated mooring system that hides the anchor away into a special space. The stairs on board are especially wide

to enable you to move around freely even when carrying materials and equipment. The 3.8 m tender can be kept in a garage and there is no need for a crane for launching and hauling it in.

On the main deck, the boat owner finds the same level of comfort you would expect to find on an Azimut yacht as well as organisation of space and furnishings designed for long stays on board: first of all, there is a single open space extending from the wheelhouse to the cockpit created so that the boat owner and guests can share space and time together. The galley is located at the entrance to the salon to make it easier to serve the external dining areas (cockpit and flybridge) as well as the internal one. The flybridge is fitted out as another secluded area where there is room to sunbathe by relaxing on the two chaise longues or lunch in an exclusive spot in the shade of the hard top.

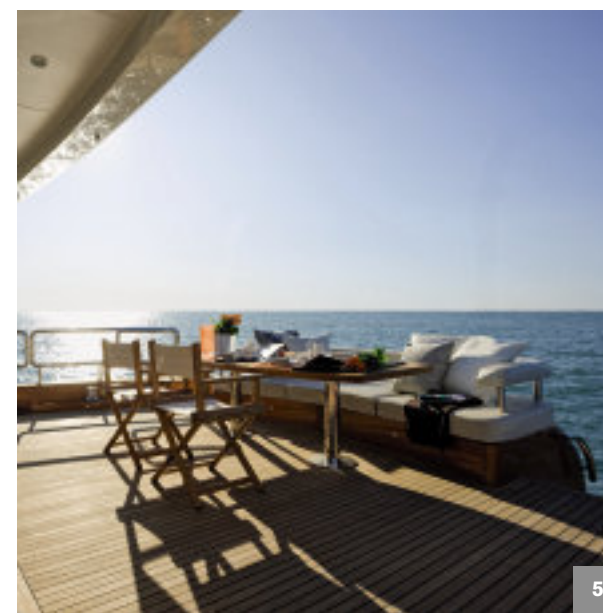
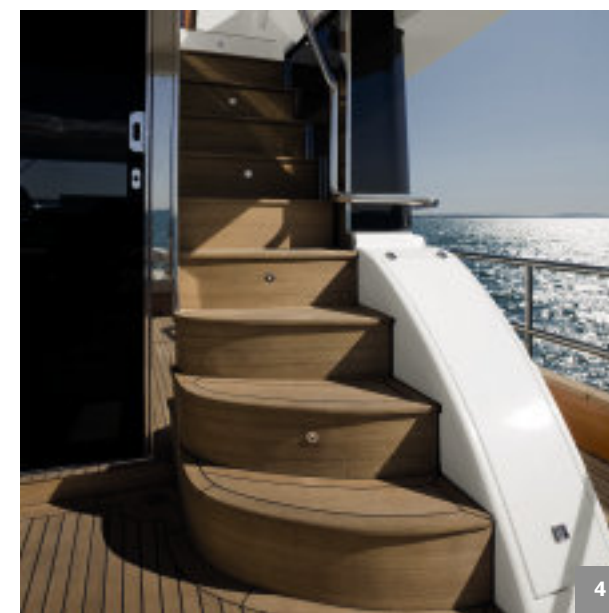
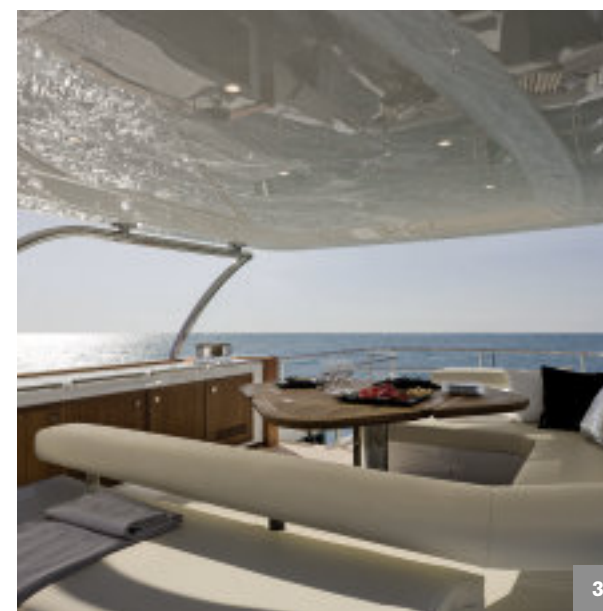
Space is comfort and in addition to three exclusive suites, the Magellano offers another cabin accessed from the salon that can be used by the crew but can also accommodate extra guests when necessary. The same access leads to an area used entirely for storage which is particularly important when embarking on cruises that last several days.

## INTERIOR STYLING AND CONCEPT

The all-encompassing windows on the main deck along with low furniture in the interior help the natural light to flood in. Large windows in the master suite set new standards for this type of boat. The materials used to cover the surfaces and tops are inspired by the nautical tradition and bring it up to date with the latest canons of elegance. The wood and materials used are mostly dark and create a pleasant contrast with the champagne colour of the sofas.

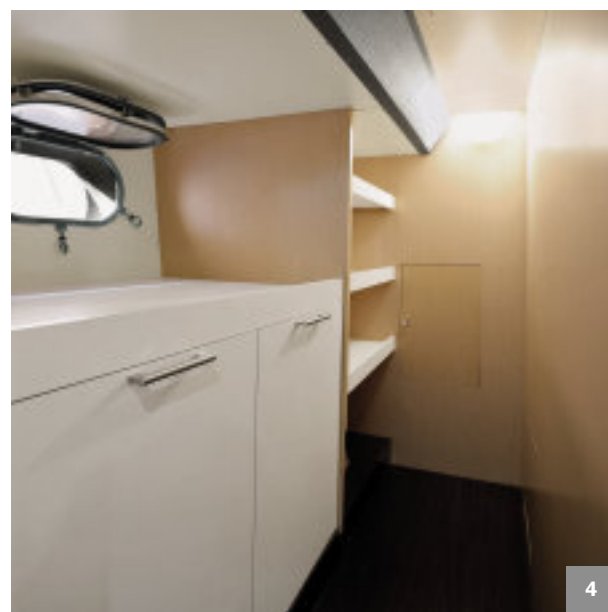






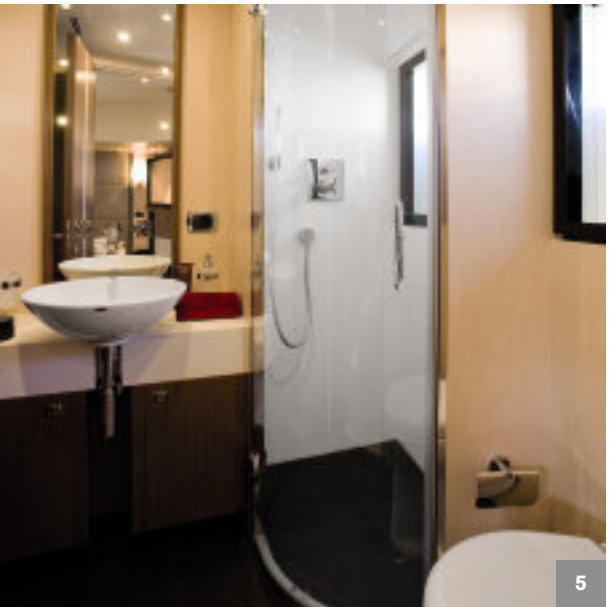
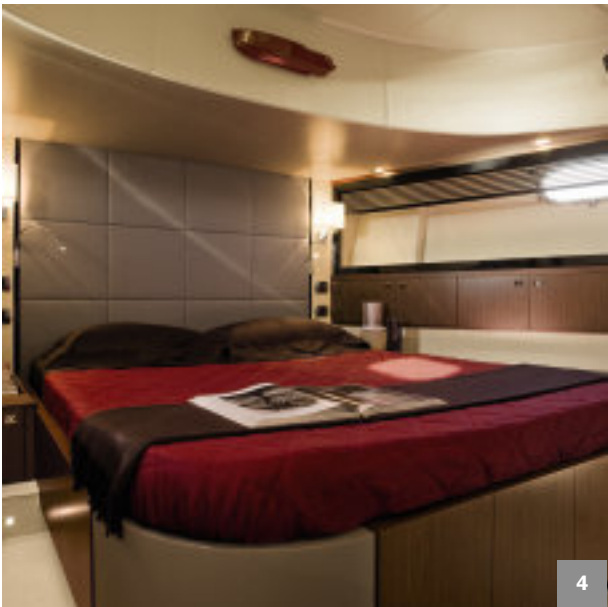
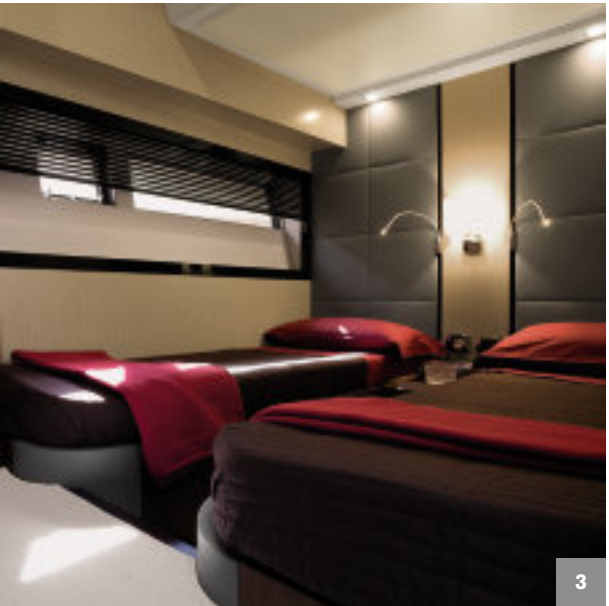
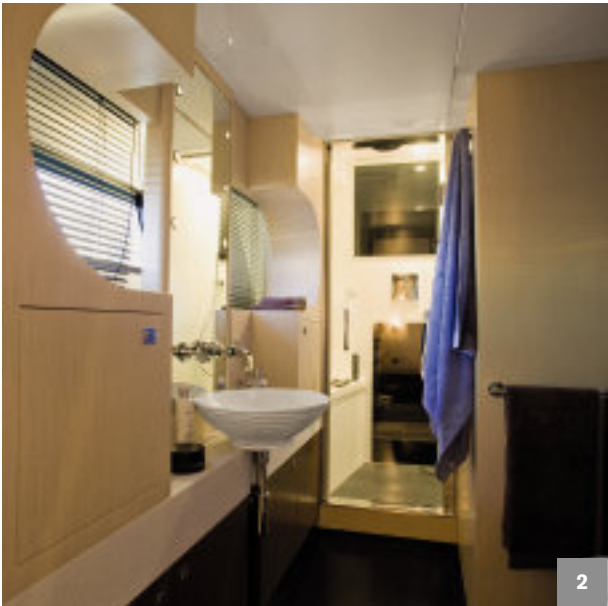
1. Bow relaxing area
2. Flybridge
3. Dining area on the flybridge
4. Staircase to the flybridge
5. Cockpit





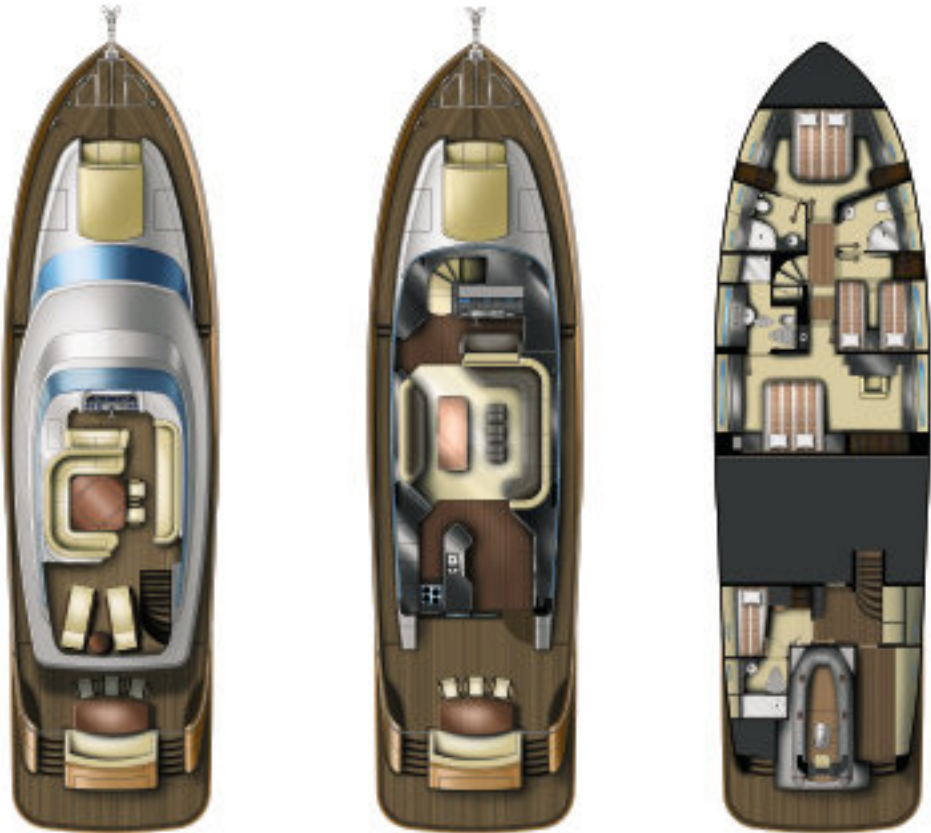
- 1. Salon
- 2. Galley
- 3. Internal helm station
- 4. Storage area
- 5. Dining area





1. Owner suite  
2. Owner head  
3. Guest cabin  
4. VIP cabin  
5. VIP head

TECHNICAL DATA



LENGTH OVERALL (INCL. PULPIT)  
HULL LENGTH (INCL. PLATFORM)  
BEAM (AT MAIN SECTION)  
DRAFT (INCL. PROPS AT FULL LOAD)  
DISPLACEMENT (AT FULL LOAD)

74' 4"  
74' 1"  
19' 8"  
5' 7"  
56 t

ENGINES  
MAXIMUM SPEED (AT HALF LOAD)  
CRUISING SPEED (AT HALF LOAD)  
RANGE AT 12 KNOTS SPEED  
FUEL CAPACITY  
WATER CAPACITY

2 x 1015 mHP (746 kW) CAT C18  
25 knots  
21/12 knots  
1.100 nautical miles  
2.007 US gls  
396 US gls

CABINS  
BERTHS  
HEAD COMPARTMENTS

3 + crew  
6 + crew  
3 + crew

BUILDING MATERIAL  
KEEL

GRP  
Semi-displacement with angle of deadrise 10,1° aft

EXTERIOR STYLING & CONCEPT  
INTERIOR DESIGNER  
HULL DESIGNER  
BUILDER

KENFREIVOKH  
KENFREIVOKH  
BILL DIXON  
AZIMUT

REGULATIONS UNI ISO 8666